



Simplex Fire Panel 4100ES

Release Notes



Table of Contents











Point Status	2
Full Status	3
Panel Status	4
Full Status	4
System Status	4
Full status	5
Keypad Status	5
EntraPass Generic Status	5
Virtual Keypad	6
Events	7
The Integrated Component window	8







Point Status

Multiple conditions may exist at the same time on a Simplex component. There are 4 types of alarm that can be reported on any given point depending on the programming:

- **Fire alarm:** The **Fire** property indicates the detection of smoke, heat, etc. that may be associated with a fire.
- **Priority 2 alarm:** The **Priority 2** alarm is normally used for a security type application. A Priority 2 alarm may be used when monitoring doors or windows.
- **Supervisory alarm:** The **Supervisory** property indicates a condition that is not a life safety situation but that requires the operator's attention. A Supervisory alarm may be used to indicate the detection of a water valve closure.
- **Trouble alarm:** The **Trouble** property indicates a fault condition. Fault conditions include device failure, earth ground detection, and short circuit detection.

Panel Condition	Full Status Text	Priority	Icon
Unknown	Unknown	1 (highest)	
Fire ack required	Fire ack required	2	
Fire is acknowledged	Fire	3	
Priority2 ack required	Priority2 ack required	4	
Priority2 is acknowledged	Priority2	5	
Supervisory ack required	Supervisory acknowledgment required	6	
Supervisory is acknowledged	Supervisory	7	
Trouble ack required	Trouble acknowledgment required	8	
Trouble is acknowledged	Trouble	9	
Fire restore ack required	Fire restore acknowledgment required	10	
Priority2 restore ack required	Priority2 restore acknowledgment required		
Supervisory restore ack required	Supervisory restore acknowledgment required		

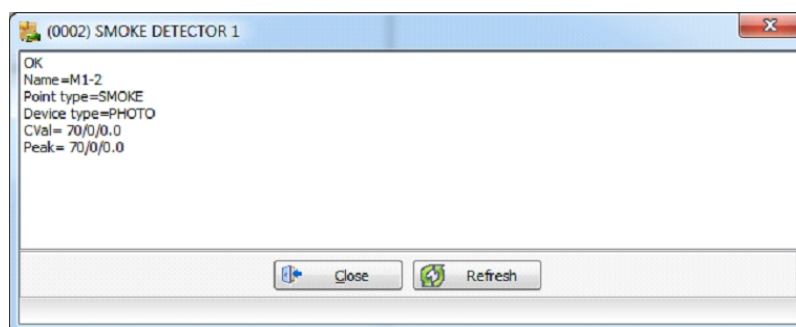


Panel Condition	Full Status Text	Priority	Icon
Trouble restore ack required	Trouble restore acknowledgment required		
OK	<p>OK</p> <p>Note: Devices will be automatically detected and be provided with corresponding icons. For now, we are committed to display pull station and smoke detectors the only devices provided with so far. Any other devices will be represented with the Simplex symbol (generic devices)</p>	11 (Lowest)	  
	Abnormal (ON)		

Note: The icon will respect the highest priority condition. The Full status text will combine and show all pending conditions with respect to the priority rank.

Full Status

The full status of the point can be obtained by right clicking on the corresponding point. The data will be adjusted to the point type and device type:



The analogical values (CVal or Peak) are captured at the alarm refresh. For run time values, the **Computer Port Protocol** can be used by typing "show 2-2-0", where 2-2-0 is the PID information corresponding to a smoke detector on our system.

CVal is divided in three parts:

- Current smoke detector value.
- Percentage of alarm.
- Percentage of smoke.


The peak values are also divided in three parts:

- Peak smoke detector value.
- Peak % of alarm.
- Peak % of smoke.

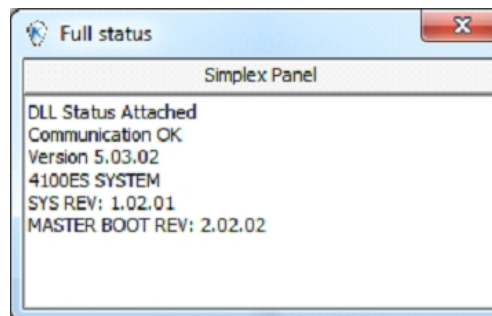


Panel Status





The panel status provides information on the DLL version and status, the communication status, the panel alarm counts and its alarm points, if any. The panel full status can be obtained from a defined graphic screen in EntraPass.

Condition	Full Status Text	Icon
Panel communication OK	DLL status Communication status DLL version Panel type Panel system revision Panel master boot revision	

Full Status



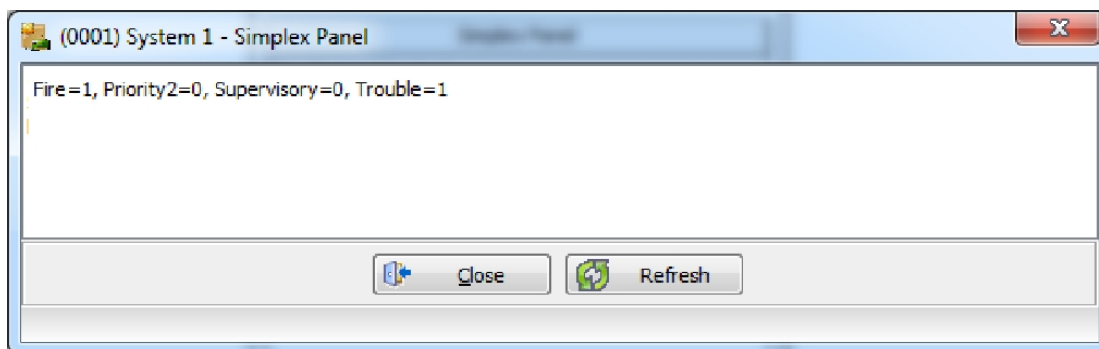
System Status

Panel Condition	Full Status Text	Icon
System OK	Panel alarm counts	
Fire alarm	Highest priority, occurs when the fire count is at least set to 1	
Priority2 alarm	Occurs when no fire alarm exist and the Priority count is at least set to 1	
Supervisory alarm	Occurs when no Supervisory alarm exist and the Supervisory count is at least set to 1.	



Panel Condition	Full Status Text	Icon
Trouble alarm	Occurs when no Supervisory alarm exist and the Trouble count is at least set to 1	

Full status



Keypad Status




Condition	Full Status Text	Icon
System OK	OK No keypad currently in use.	
	OK Keypad in used. Only one keypad can be opened at any given time.	

EntraPass Generic Status

For all integration panel components of any type (MAXYS, PowerSeries, Galaxy, KYO320, 4100ES), a set of common extra statuses are provided. These statuses completed by the detailed full status text are helpful to figure out the source of some potential problems. Here is the list.

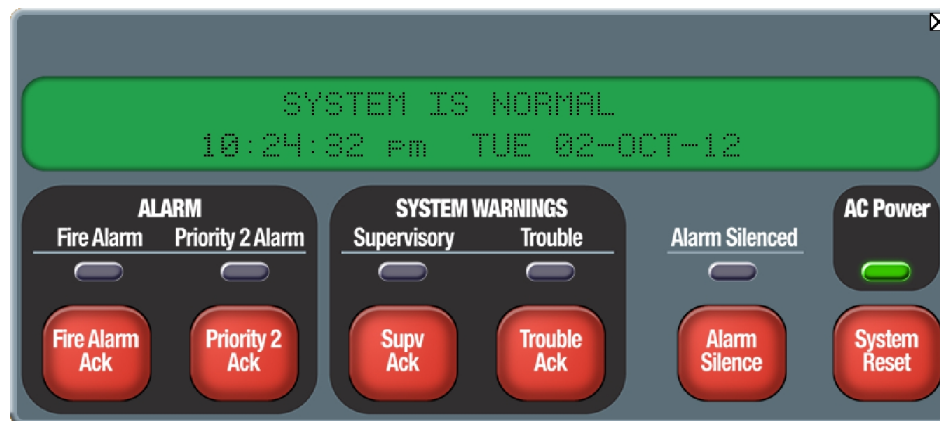
Panel Condition	Full Status Text	Icon
Gateway not running	Gateway no communication	
No Communication with the panel	Communication failure	



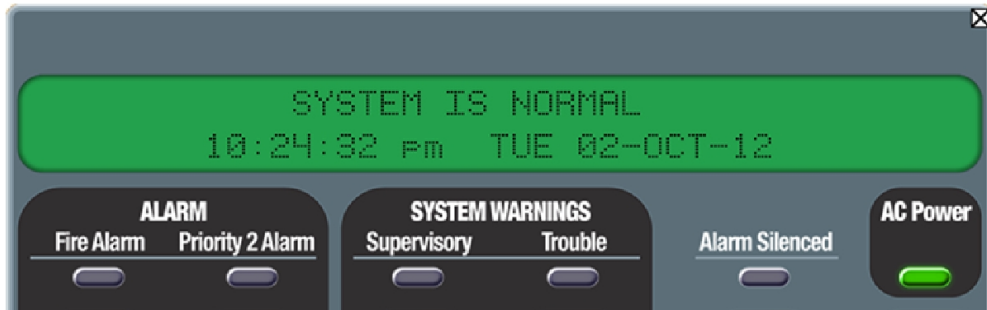
Panel Condition	Full Status Text	Icon
Uploading data from the panel	Panel component upload	
Panel DLL error	DLL status: <ul style="list-style-type: none">Failed authenticationInvalidMissingClosing	
Downloading the panel DLL firmware into the controller (KT-400 or KT-NCC)	Embedded download	

Virtual Keypad

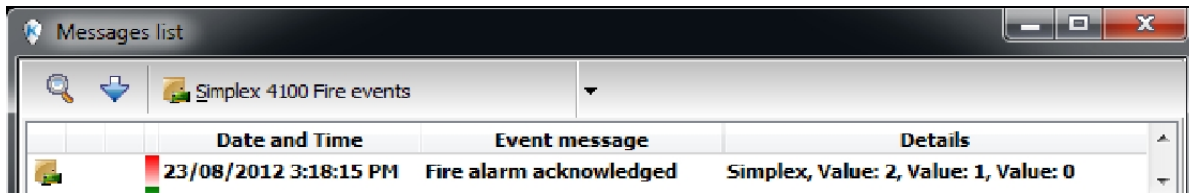
The exact LCD display and LED status of the Fire panel can be viewed using the Virtual keypad. Note that the interface does not provide any key press command. However, some simulated functionality is provided to make the red buttons functional, some of them will not be, depending on how the panel was programmed and privileged level provided.



Another graphic for the Virtual Keypad is used for the STATUS ONLY DLL type:



Events

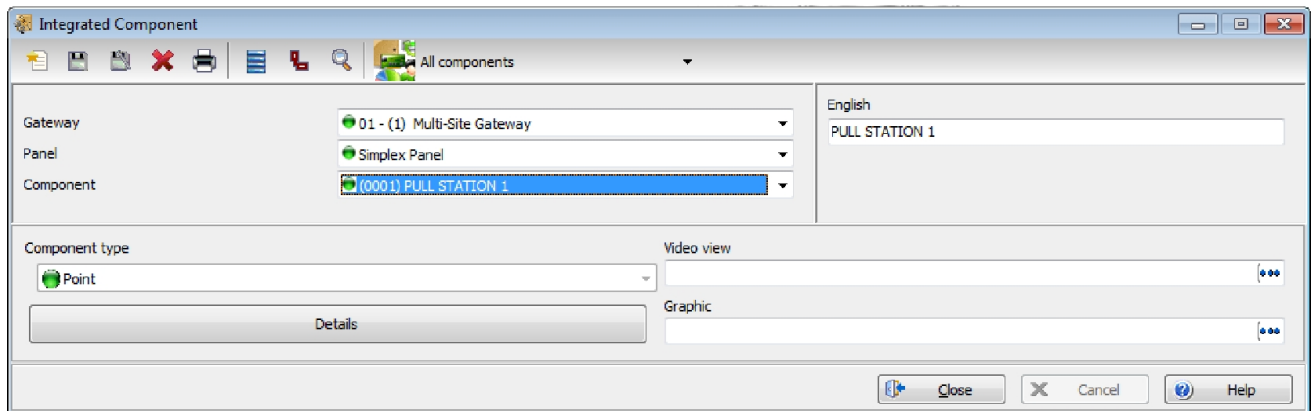


- An event named **Panel Communication Restore** will occur once the panel communication is established. Once the EntraPassGateway is up running, this event may take up to 30 seconds to occur since nothing can be done until the reception of the supervision message from the panel. The panel only issues this message in 30-second intervals by default.
- An event named **Component upload completed** occurs once the Gateway is restarted and all data is retrieved from the panel. Note that all Simplex panel events (with their corresponding timestamp) are lost when there is no communication between Simplex and EntraPass. Simplex does not buffer the events locally in order to be retrieved once the communication is back to normal, this is an important notice. A first time connection will take up to several minutes in order to extract the necessary configuration data from the panel.
- A global event per category (Fire, Prio2, Superv, Trouble) is generated once an alarm occurs on any device.
- A global restoration event per category is generated once all alarms pertaining to the same category are restored.
- A global event can be mapped on EntraPass to trigger an action immediately once a fire condition occurs or once all alarms had been restored.
- An alarm event specific to a registered component is raised once detected on any category (Fire, Prio2, Superv, Trouble). A corresponding restored event will be raised once the alarm condition is cleared.
- Extra parameters are displayed within the EntraPass Message window. The PID is the **Point Identifier** and provides three extra values to be displayed within the Messages list window, as shown in the previous screen shot. The first one is the **Board slot number**, the second is the **Point number**, the third is the **SubPoint value**.

Note: Events provided with no "Supported Component" will be reported by EntraPass as owned by the panel itself.



The Integrated Component window



- 1 - Click the **Details** button.



- 2 - Select proper values to define the fire panel device point. Once the device is granted an address (manually or automatically from IDNet import), the user will not be allowed to change it unless the point is deleted and another one is created.

Note: To add more "Pseudo Points", click the **New** button and enter the addresses in the **Point configuration** window (only IDnet points will be automatically added when the **Import IDnet points** checkbox is selected).

